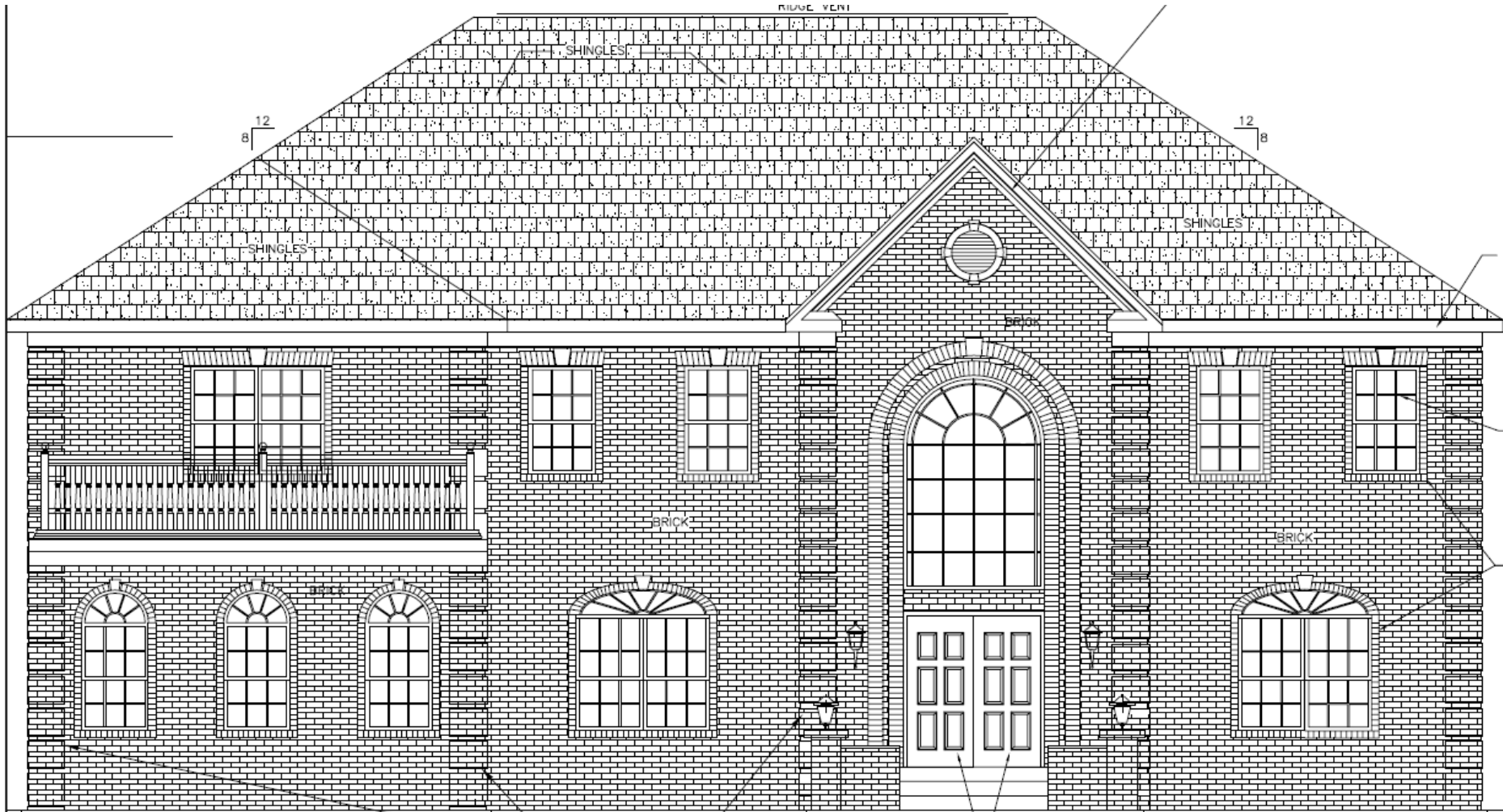
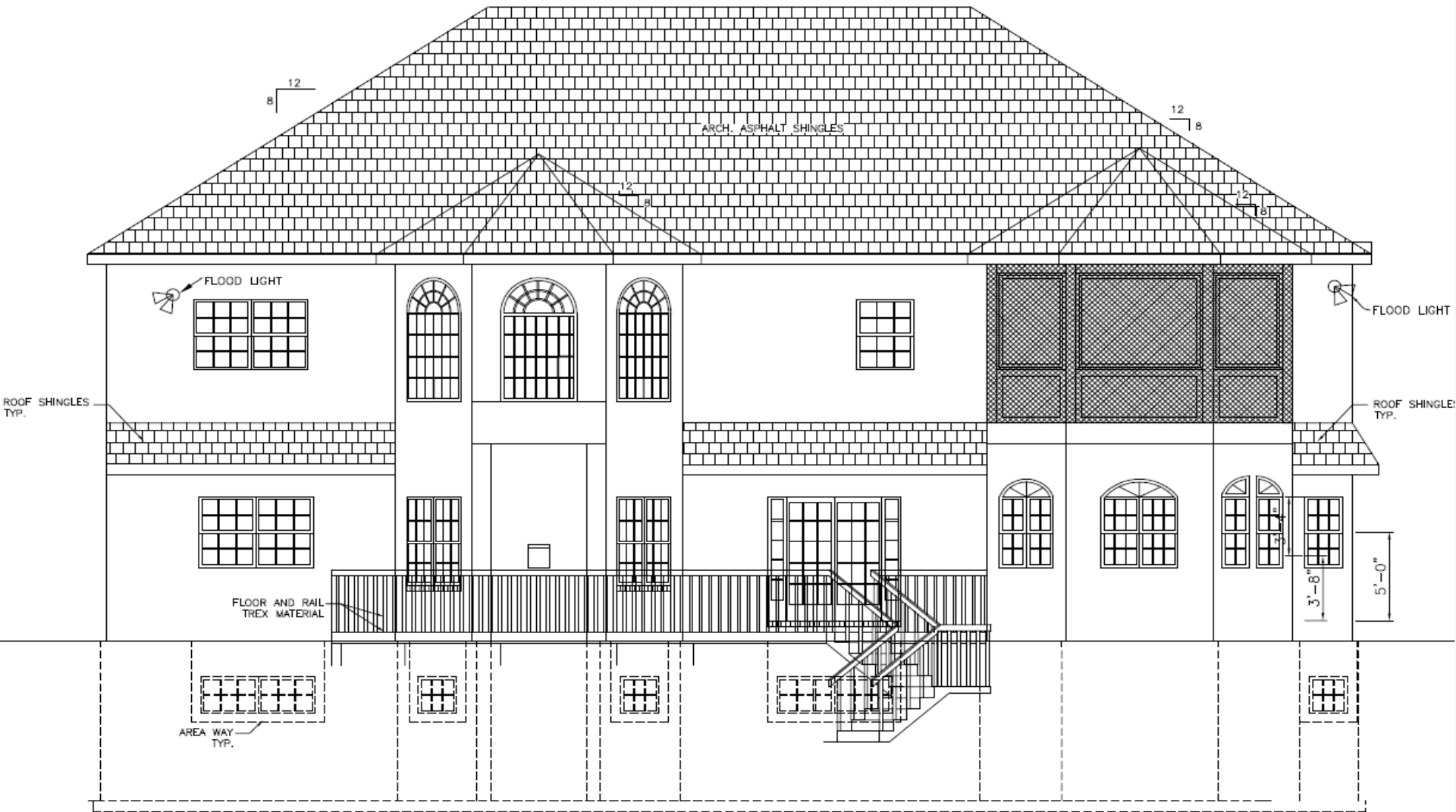


# Grand Wellington Model





REAR ELEVATION

# Grand Wellington Model



Front Elevation:

3-Car Side Load Garage

House Dim. Apprx. ~65'10.5" x 54'.0"

Finished Sq. Ft.: ~7,956sf

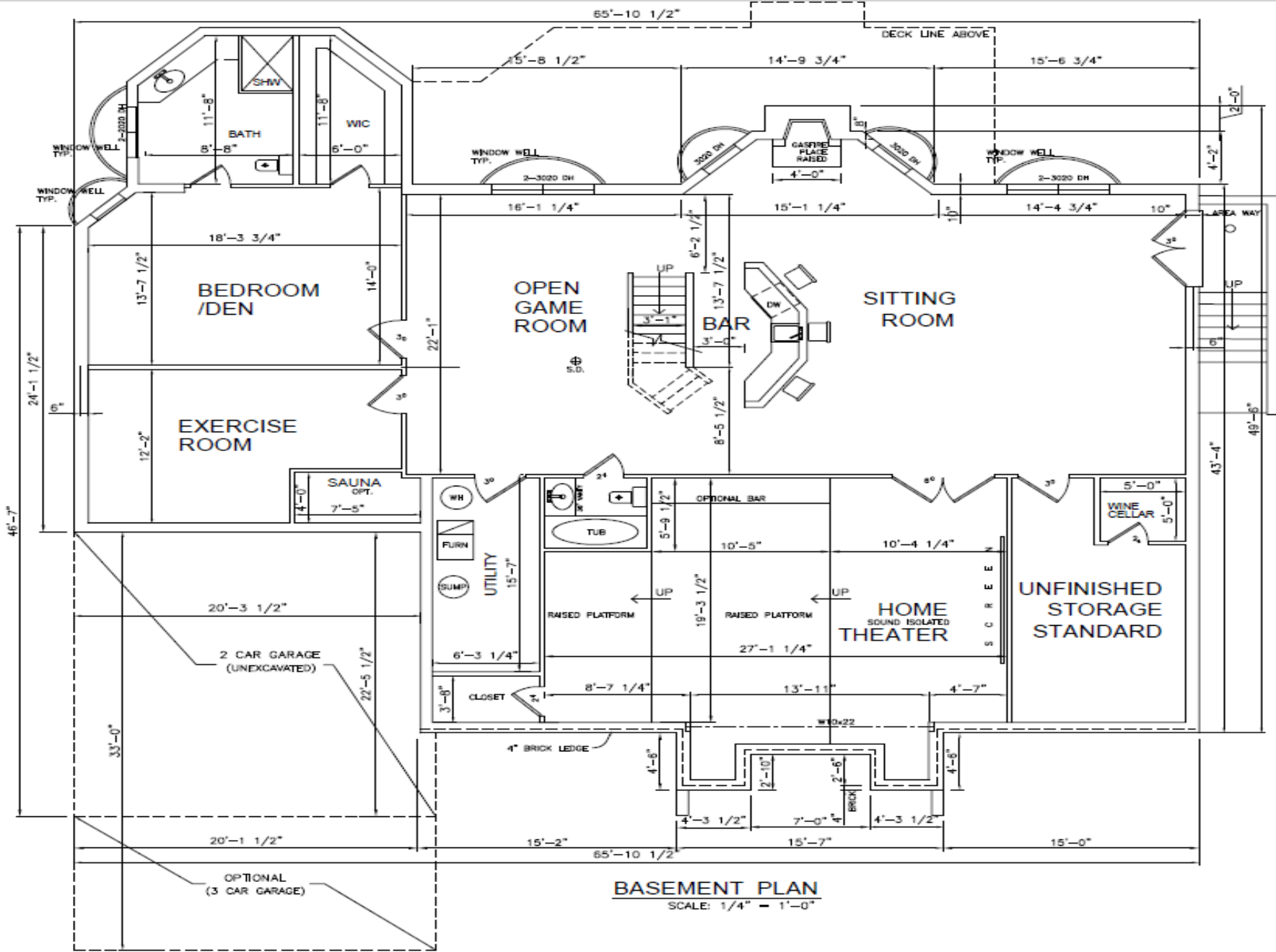
Above Grade: ~5,327sf

Below/Basement: ~2,629sf

Unfinished Sq. Ft.: ~932sf - 660sf (garage) Util Room: 96sf, Screen Porch(176sf)

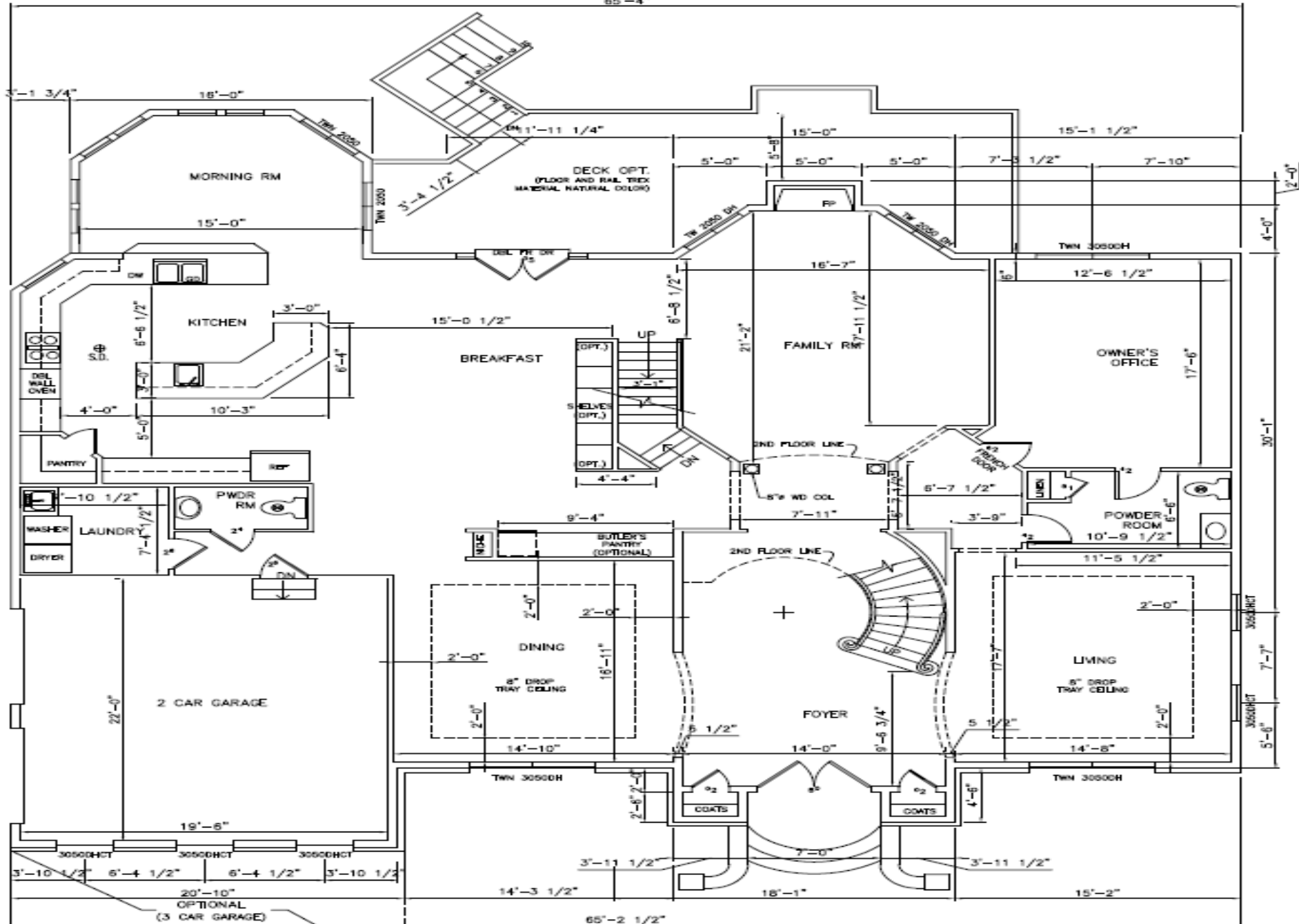
Total Sq. Ft: ~8,888sf

Deck – 18'x22'



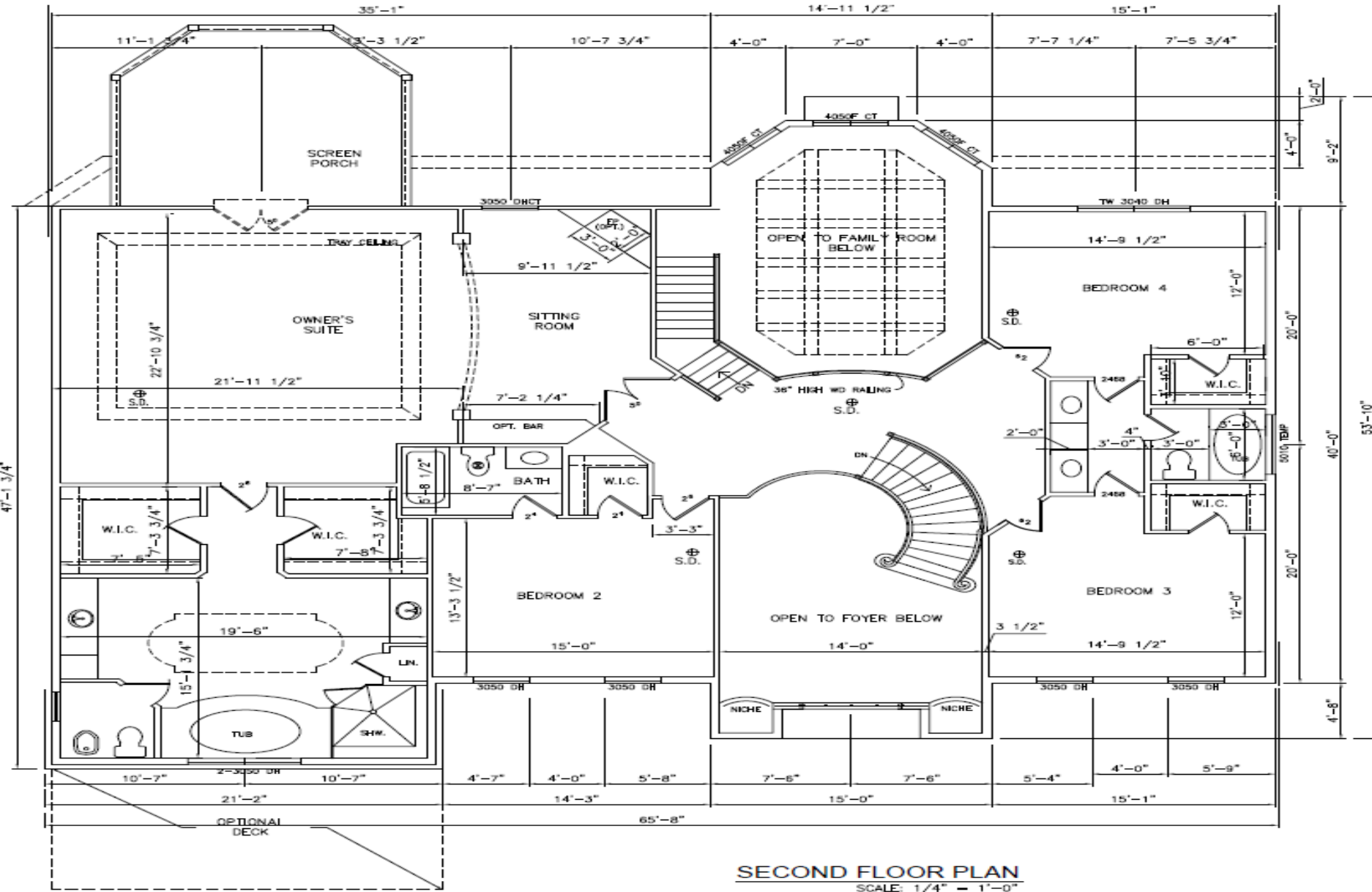
**BASEMENT PLAN**  
SCALE: 1/4" = 1'-0"

65'-4"



**FIRST FLOOR PLAN**

SCALE 1/4" = 1'-0"



**SECOND FLOOR PLAN**  
SCALE: 1/4" = 1'-0"

# Interior Features

- ⌘ Apprx. 9,000 total sq ft on 3 Levels
- ⌘ 5 Bedrooms (4 Bedrooms upstairs + 1 Bedroom/+ 1 Den in Basement)
- ⌘ 7 Bathrooms (5 Full, 2 Half)
- ⌘ 3 Car Garage (side load)
- ⌘ 3 Gas Fireplaces
- ⌘ 10' First Floor, 9' Second Floor, 9' Basement
- ⌘ Grand Foyer, 2-Story, Crystal Chandeliers
- ⌘ Grand Master Suite with sitting room and private screen porch overlooking rear yard/woods
- ⌘ Master Bathroom: Marble Flooring, Separate His/Her Vanity (Granite or Marble Top), Built-in W.I.C, 6' Jacuzzi with Massage jets, Steam Shower
- ⌘ Chef's size Kitchen w/large Island, Built-in GE Monogram Appliances, Butler's Pantry
- ⌘ Fully Finished Basement Bedroom/Den, Large Media Room, Wet Bar, Full Bathroom, Half Bath

# ECO FRIENDLY FEATURES

- ⌘ R19 -- EXTERIOR WALLS (2x6 construction)
- ⌘ R37 ATTIC INSULATION
- ⌘ LOW-E Double-Pane Jeld-Wynn WINDOWS
- ⌘ BEAUTIFUL 8' WOOD FRONT ENTRY DOOR
- ⌘ High Efficiency Gas FURNACES
- ⌘ **3 ZONED HVAC WITH 6 CONTROLLERS**
- ⌘ HIGH EFFICIENCY POWER-VENT GAS WATER HEATER
- ⌘ **400 AMP ELECTRICAL SERVICES**
- ⌘ ENERGY-STAR APPLIANCES (Monogram)
- ⌘ NATURAL GAS HEATING
- ⌘ KOHLER FAUCETS AND TOILETS



**KOHLER.**